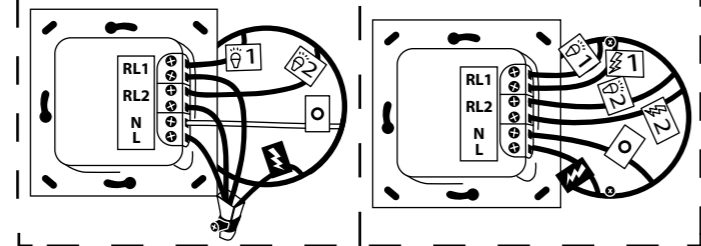


more info at:
www.iotty.com/support

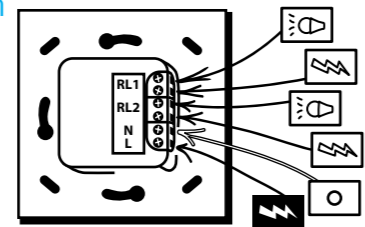
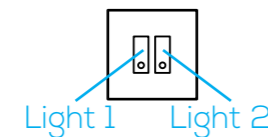


How to install a multiple gang iotty Light Switch:

A) In case of loads operating at the same voltage than iotty. **B)** In case of loads operating at different voltages than iotty.



Overview of the iotty Light Switch with multiple gangs.



In **both cases** start with steps 1 and 2 (which you can find on the back of this manual).

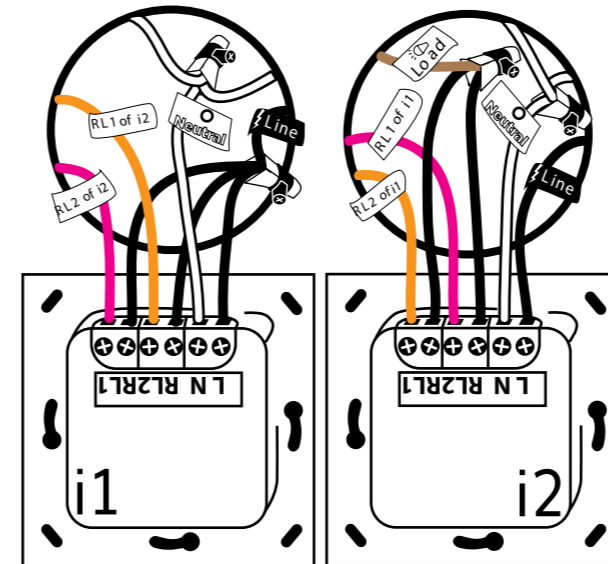
A) Insert the Neutral wire into the terminal screw labeled with N. Connect the Live wire from the wall together with three wires. Insert one into the terminal screw labeled with L and one into each RL terminal. Insert the Loads wires one per each RL terminal.

B) Insert the Neutral wire in the terminal screw labeled with N. Insert the Live Wire in the terminal screw labeled with L. Every RL needs two wires, in one terminal screw insert the External Power Supply, in the other terminal insert the Load.

In **both cases** finish following steps 4, 5 and 6.

How to install a multiple gang iotty Light Switch as a 2 way switch application (to control a load from two point).

Instructions on the next page.



Remember:

If you are connecting a two gangs switch you won't be able to use **one of the two gangs**.

If you are making a 2 ways between two switches, one mechanical and one iotty, you won't be able to control the light from the app, **you will lose all smart functions**. [For the instructions of this case go to www.iotty.com/support]

Start with steps 1 and 2 (which you can find on the back of this manual). Choose which iotty will become i1 and which one i2.

iotty 1 (i1):

Insert the Neutral wire into the terminal screw labeled with N. Insert the Live Wire from your wall in the screw terminal labeled with L and in one of the screw terminals of the RLs. Connect the RLs of i1 inverted with those of i2 (RL1 with the RL2 of i2 and RL2 with the RL1 of i2).

iotty 2 (i2) :

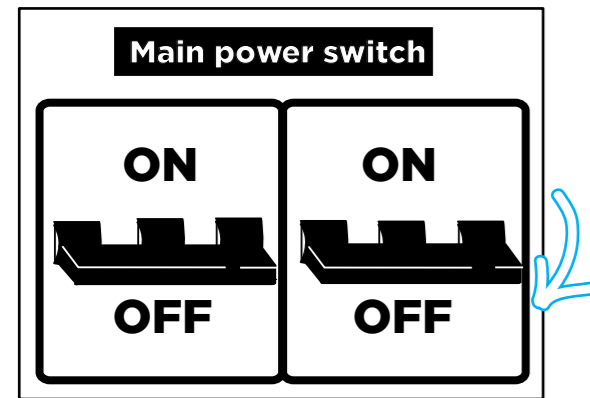
Insert the Neutral wire into the terminal screw labeled with N. Insert the Live Wire wire from your wall into the screw terminal labeled with L. Insert in one of the screw terminal of the RLs the Load you want to control.

Insert in the remaining screw terminal of the RLs the inverted wires of i1 (RL1 with the RL2 of i1 and RL2 with the RL1 of i1).

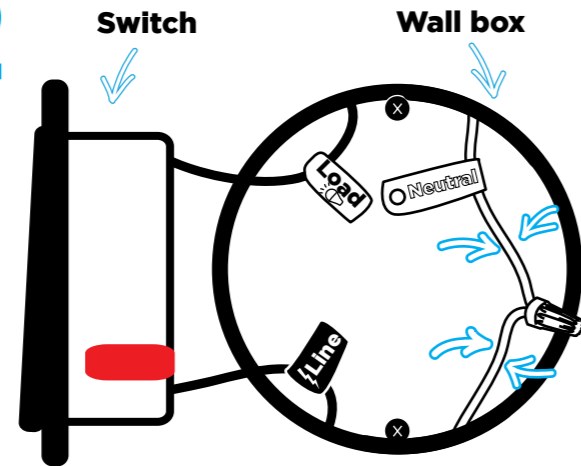
Now follow steps 4, 5, 6. Set the light of each iotty (in this case light1 and light2) as Deviator.

WARNING: Electrical wirings should be done by a professional electrician. Incorrect installation is dangerous or illegal. Please call a professional electrician if you are unfamiliar or uncomfortable with electrical work.

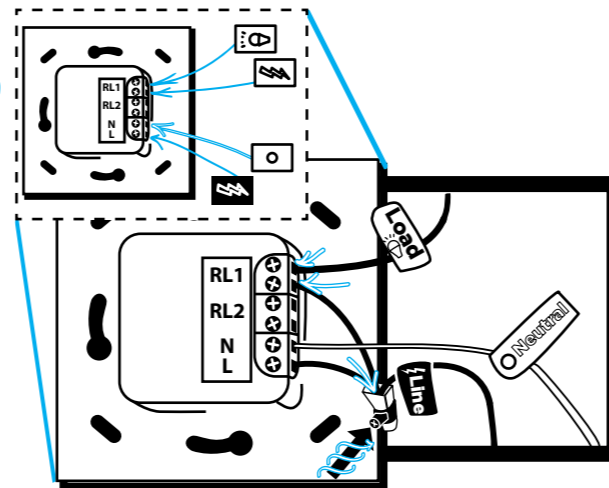


1

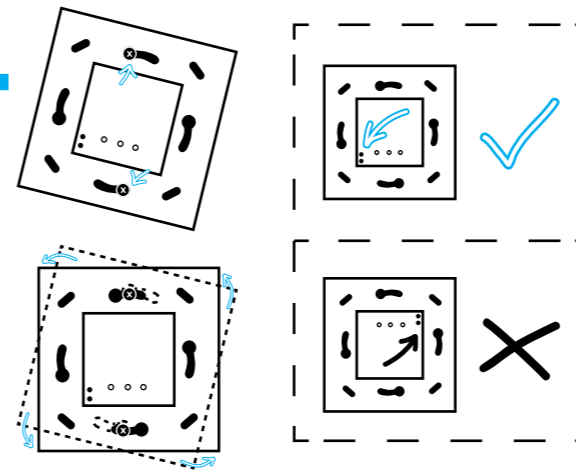
Turn off the power at the circuit breaker for the switch you are replacing.

2

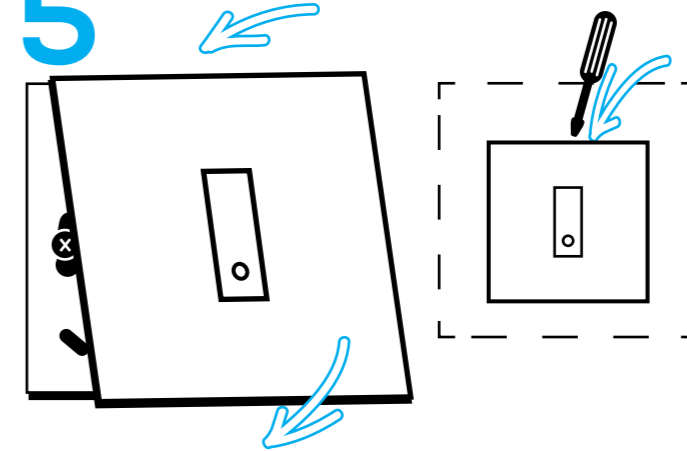
Remove your old switch and label your wires. Remember that you **must** have a *Neutral* wire to install a *Retrotouch iotty Light Switch*. Before to start wiring remove the faceplate from *iotty* as shown in step 5.

3

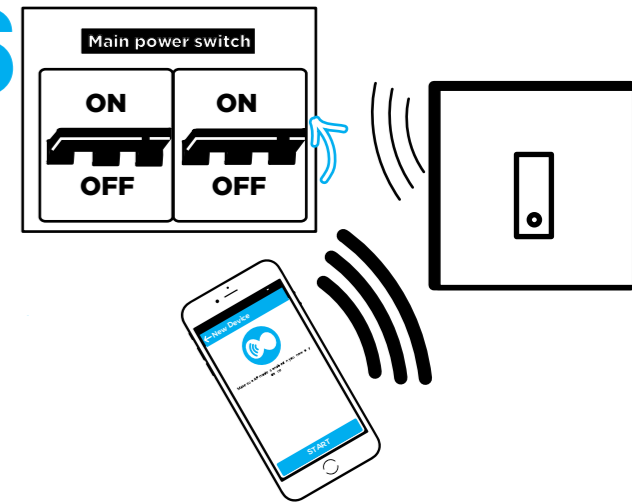
Insert the *Neutral* wire into the screw terminal labeled with *N*. Insert the *Line* into the screw terminals of *RL1*. If you have multiple gangs repeat the instructions. If you have a ground wire, place it into the wall box.

4

Push all the wires back into the wall box and try to allow as much space for the switch as possible. Insert the *iotty Light Switch* in the wall box screws. Do it in order to place the two black buttons **down**.

5

Attach your *iotty Light Switch* faceplate. To remove use a screwdriver to lift the faceplate. If you want to hide one gang apply the card-stock provided on the back of the faceplate.

6

Turn on the power at the circuit breaker. Download the *iotty* app and sign in. Connect to your *iotty Light Switch* wifi [*IOTTY_serial-number*]. Now go to the app and add a new device.

WARNING: Electrical wirings should be done by a professional electrician. Incorrect installation is dangerous or illegal. Please call a professional electrician if you are unfamiliar or uncomfortable with electrical work.