

INSTALLATION WARNINGS:

BEFORE COMMENCING INSTALLATION ISOLATE YOUR MAINS ELECTRIC SUPPLY

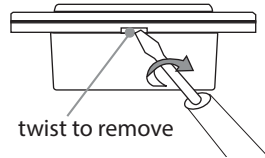
Read the instructions care fully before starting the installation process and keep them for future reference. This product must be installed by a qualified electrician. This product should be installed in accordance with the relevant sections of the building regulations code, and the current edition of the IEE Wiring Regulations (BS 7671:Requirements for electrical installations) and appropriate statutory regulations.

Do not exceed the Maximum Power Rating:

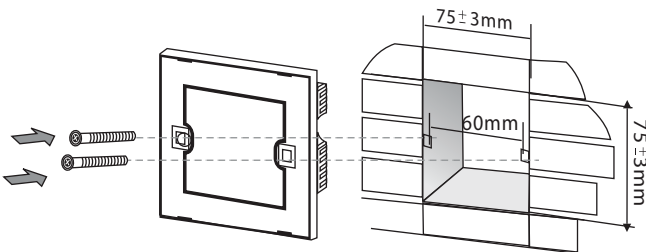
Rating 13A Voltage 250V~ BS 5733 BS EN 60669-1 CE certified

Installation

Remove the glass panel of a fused spur Using a small flat screwdriver remove the front cover by placing the screw driver in the location notch on the bottom part of the cover and twist to unclip the cover.

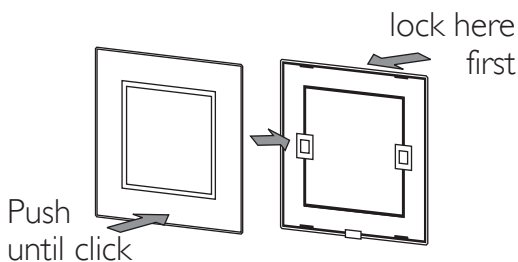


Wiring: Wire as described in the diagram overleaf. Push wires firmly into terminals and tighten terminal screws so that wires are held securely. No bare wires should protrude from the terminals. Ensure correct wires are connect to the correct terminals, if incorrectly wired, this could damage the switch.

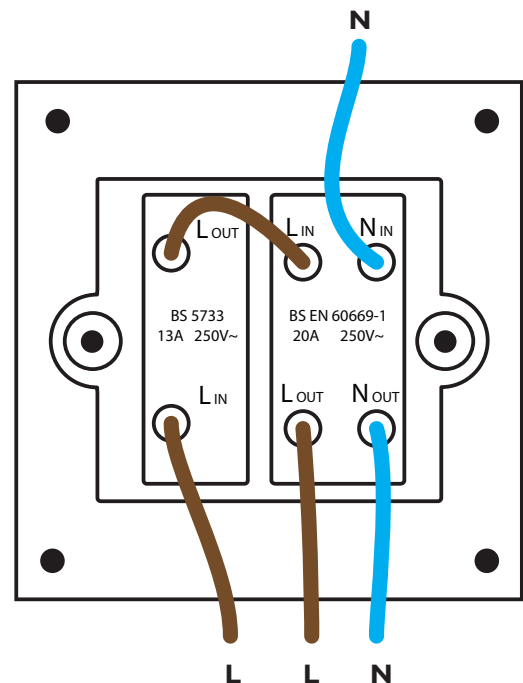


Fix screws: Use the screws supplied to attach unit to backbox using a flat head screwdriver

Reattach the glass panel: Align the glass panel over the fused spur and firmly push to click into place.



Wiring diagrams



Guarantee

All items purchased, come with a 1 year warranty (from date of purchase). Please keep proof of purchase.

If any of our products become faulty within this 1 year period, please contact us. Please send product/s by recorded post, as proof of dispatch as we cannot be held liable for products lost in the post. If the product is found to be faulty, a replacement shall be sent within 7 working days from date received. In all cases, an identical replacement shall be sent, however, if the product has been discontinued a suitable alternative shall be sent with the same or similar specification.

Scan the QR Code
to view FAQ's and Support

