



INSTALLATION WARNINGS:

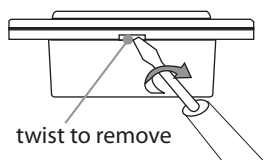
BEFORE COMMENCING INSTALLATION ISOLATE YOUR MAINS ELECTRIC SUPPLY

Read the instructions care fully before starting the installation process and keep them for future reference. This product must be installed by a qualified electrician. This product should be installed in accordance with the relevant sections of the building regulations code, and the current edition of the IEE Wiring Regulations (BS 7671: Requirements for electrical installations) and appropriate statutory regulations.

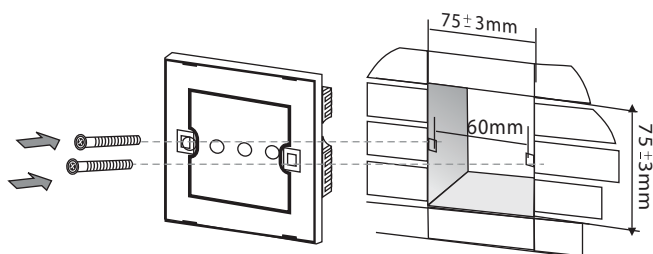
Do not exceed the Maximum Power Rating detailed in the specification over leaf.

Installation

Remove the glass panel of a touch remote switch: Using a small flat screwdriver remove the front cover by placing the screw driver in the location notch on the bottom part of the cover and twist to unclip the cover.

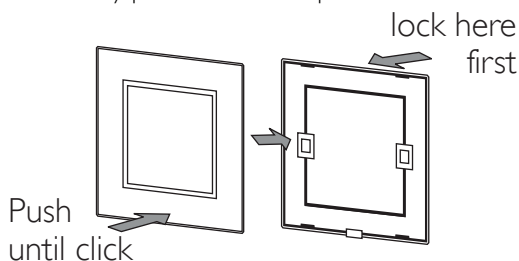


Wiring: Wire as described in the diagram opposite. Push wires firmly into terminals and tighten terminal screws so that wires are held securely. No bare wires should protrude from the terminals. Ensure correct wires are connect to the correct terminals, if incorrectly wired, this could damage the switch.



Fix screws: Use the screws supplied to attach switch to backbox using a flat head screwdriver

Reattach the glass panel: Align the glass panel over the switch and firmly push to click into place.



Power on: Once the power is on, wait 2 minutes for the switch to power up, then touch the panel to turn on the light.

The remote (RTS2030 remote models only)

Pairing a remote

1. Turn the dimmer on

2. Then touch & hold the down dim arrow of the switch for 5 seconds and wait for the beep.

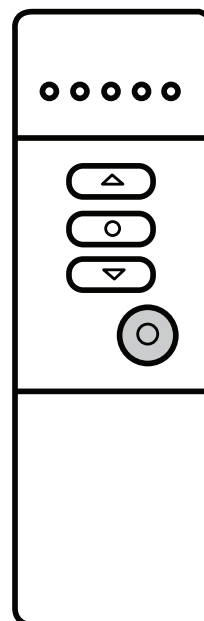
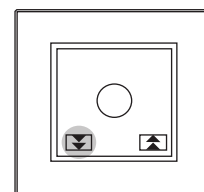
3. Then select your dimmer (ie equip 1,2,3,4,5) then press set / select button. (bottom right button for 5 secs till beep. The remote is now paired.

Up to 5 dimmers can be paired to one remote

Un-registering a remote:

Repeat steps for pairing the remote. When pressing and holding the set code button, wait for two beeps and the remote will be un-paired.

Factory reset: Press and hold the switch for 5 seconds till you hear a beep, continue to hold for a further 8 seconds until you hear another beep. The switch is now back to factory settings.

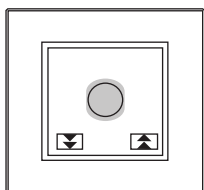




Using the dimmer

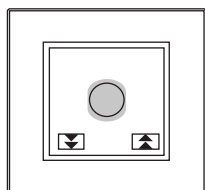
TO TURN ON

Tap once around the circle to turn on. Double tap to go to max brightness



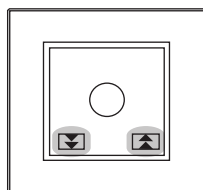
TO TURN OFF

Touch the switch panel the circle to turn off



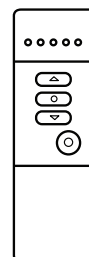
DIM UP & DOWN

Touch & hold the down arrow to dim down and the up arrow to dim up.



USING THE REMOTE

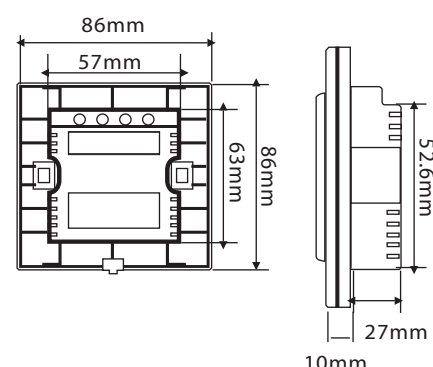
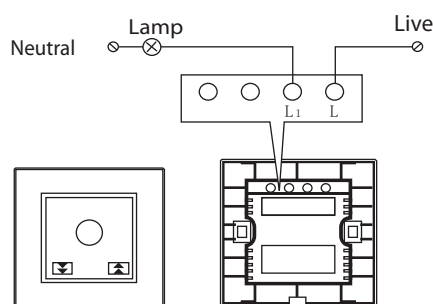
Press small circle to turn on the dimmer to the last setting. press the up and down buttons to dim up and down.



- = Turn on / off
- ▲ = Dim up
- ▼ = Dim down
- ⊙ = Set / select

Wiring diagrams

1 Gang model



Specification

Voltage: 220~240V ~ 50/60Hz

Operating Power:
1 Gang (25-560W),

Working Temperature: 0°C~40°C
Relative Humidity: 10% - 93%
Energy Consumption: <0.02W

Measurement: 86x86mm
Backbox depth: 35mm

life: 100,000 times at least (relay useful life)

Remote usage distance >20M
Remote battery: 27A 12vDC
Battery life : 1 year (dependent on usage)
Power: < 0.1mW

CE & RoHS Certified

Features

- Microline Glass Panel
- Touch & Remote control
- Memory dimming feature (Remembers last lighting setting)
- Auto gradual dim up/down on power on/off.
- Remote control upto 20m (RF 433Hz)
- Background light (with indicator light)
- Chrome surround
- Works with LED's, Halogens, standard bulbs.

Guarantee

All items purchased, come with a 1 year warranty (from date of purchase). Please keep proof of purchase.

If any of our products become faulty within this 1 year period, please contact us. Please send product/s by recorded post, as proof of dispatch as we cannot be held liable for products lost in the post. If the product is found to be faulty, a replacement shall be sent within 7 working days from date received. In all cases, an identical replacement shall be sent, however, if the product has been discontinued a suitable alternative shall be sent with the same or similar specification.

