



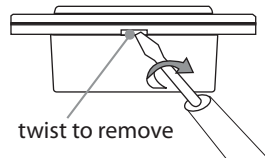
## INSTALLATION WARNINGS:

### BEFORE COMMENCING INSTALLATION ISOLATE YOUR MAINS ELECTRIC SUPPLY

Read the instructions care fully before starting the installation process and keep them for future reference. This product must be installed by a qualified electrician. This product should be installed in accordance with the relevant sections of the building regulations code, and the current edition of the IEE Wiring Regulations (BS 7671: Requirements for electrical installations) and appropriate statutory regulations.

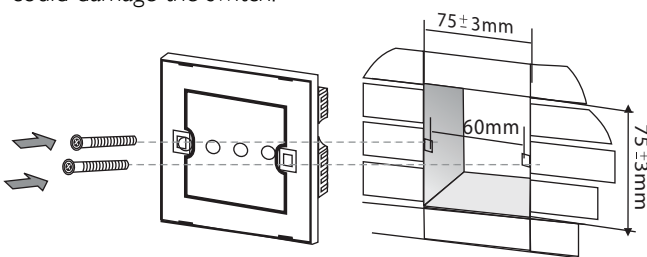
## Installation

**THIS WIREFREE SWITCH MUST BE USED IN CONJUNCTION WITH A RTS2020 OR RTS2040 WIRED TOUCH AND REMOTE SWITCH.**



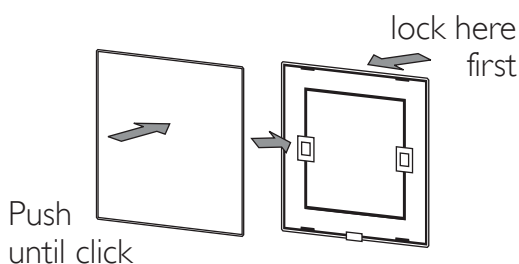
**Remove the glass panel** of a touch remote switch: Using a small flat screwdriver remove the front cover by placing the screw driver in the location notch on the bottom part of the cover and twist to unclip the cover.

**Wiring:** Wire the wired switch as described in there instructions. remember to push wires firmly into terminals and tighten terminal screws so that wires are held securely. No bare wires should protrude from the terminals. Ensure correct wires are connect to the correct terminals, if incorrectly wired, this could damage the switch.



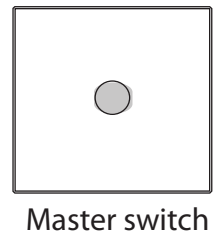
**Fix screws:** Use the screws supplied to attach switch to backbox using a flat head screwdriver

**Reattach the glass panel:** Align the glass panel over the switch and firmly push to click into place.



## Pairing the switch

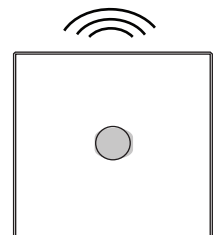
**The wireless switch is remotley syncing to the master switch which is wired. This wired switch can sync to up to 4 wire-less switches or remote controls at any one time.**



Master switch

### Pairing a wirefree switch

1. turn on the light then touch & hold the on/off touch area of the master switch for 5 seconds and wait for the beep.



Wireless switch

2. Press and hold a touch area on the wireless switch control and release after you hear a beep. The switch is now paired. Repeat for all gangs you required paired.

**Power on:** Once paired, touch the panel it will only illuminate when pressed as running on 9V battery power.

### Un-registering a remote:

Repeat steps for registering the remote. When pressing and holding the remote button, wait for two beeps and the remote will be un-paired.

**Factory reset:** Press and hold the switch for 5 seconds till you hear a beep, continue to hold for a further 8 seconds until you hear another beep. The switch is now back to factory settings.



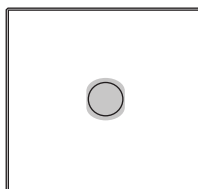
## Using the Wirefree switch

**The light will illuminate only when touched, this is to prolong the life of your battery.**

**Note: do not double press, allow 0.5 seconds before re touching the switch.**

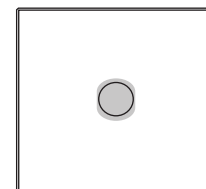
### TO TURN ON

Tap once around the circle to turn on. The ring will glow and after a second the light will come on



### TO TURN OFF

Touch the switch panel the circle to turn off



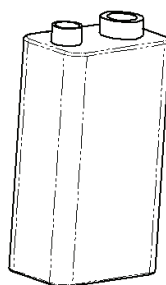
## Changing the battery

**To Change the battery, unclip the front panel.**

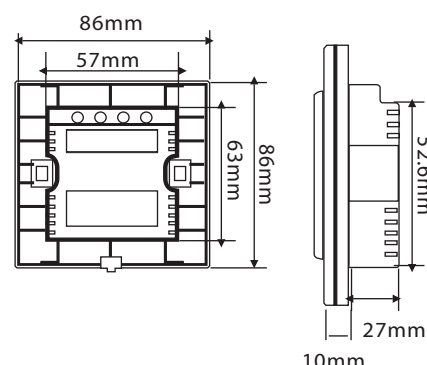
**Gently pull off the central touch area. pull stright off**

**Swapp the battery and re assemble**

**Wirefree switch  
(operated by 9V battery)**



**Use a minimum of  
a 30mm backbox**



## Specification

Voltage: 9V

Operating Power of wired switch:  
1 Gang (25-800W)

Working Temperature: 0oC~40oC  
Relative Humidity: 10% - 93%

Measurement: 86x86mm  
Backbox depth: 35mm

life: 100,000 times at least (relay useful life)

Remote usage distance >20M  
Battery: 9V PP3  
Battery life : 1 year (dependent on usage)

CE & RoHS Certified

## Features

- Microline Glass Panel
- Touch control
- Completley wireless
- Remote control upto 20m (RF 433Hz)
- Indicator light when pressed

## Guarantee

All items purchased, come with a 1 year warranty (from date of purchase). Please keep proof of purchase.

If any of our products become faulty within this 1 year period, please contact us. Please send product/s by recorded post, as proof of dispatch as we cannot be held liable for products lost in the post. If the product is found to be faulty, a replacement shall be sent within 7 working days from date received. In all cases, an identical replacement shall be sent, however, if the product has been discontinued a suitable alternative shall be sent with the same or similar specification.

