



retrotouch
Plug socket instruction manual

RTS2000 Plug sockets

INSTALLATION WARNINGS:

BEFORE COMMENCING INSTALLATION ISOLATE YOUR MAINS ELECTRIC SUPPLY

Read the instructions carefully before starting the installation process and keep them for future reference. This product must be installed by a qualified electrician. This product should be installed in accordance with the relevant sections of the building regulations code, and the current edition of the IEE Wiring Regulations (BS 7671: Requirements for electrical installations) and appropriate statutory regulations.

Ensure all connections are made correctly and the cables are not stressed and all terminal screws are tight firmly holding the cables. All Sockets must be earthed and the leads must be correctly sleeved.

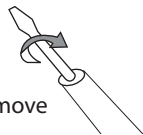
Ensure that all electrical connections are correct and fully secured and that the product is screwed securely to its mounting box before turning the mains electricity supply on.

To prevent fire hazard do not exceed the maximum rated current of the socket.

Installation

1. Remove the glass panel of

a socket: Using a small flat screw-driver remove the front cover by placing the screw driver in the location notch on the bottom part of the cover and twist to remove the cover and twist to unclip the cover.



2. Ensure the backbox is secure in the wall.

3. Strip back cable sheath and trim the wires so no excess wire is protruding out of the terminal.

4. Ensure there is a green/yellow insulation sleeve on the bare earth wire.

5. Ensure the wires are connected to the correct terminal, see diagram overleaf.

RED or BROWN WIRE to terminal marked 'L'

BLACK or BLUE WIRE to terminal marked 'N'

GREEN/YELLOW to terminal marked '⏏'

6. Check all the connections are firmly in place and the screws are tightened.

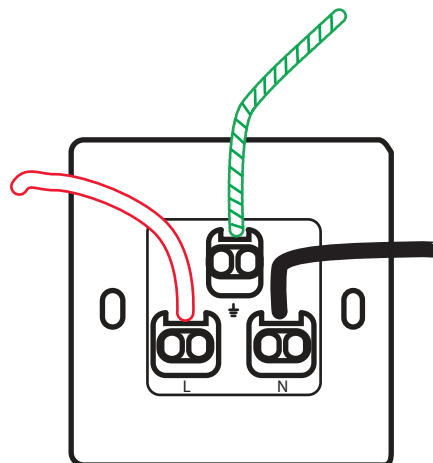
7. Taking care not to knock, pinch or trap any of the cables insert the socket back in to the backbox

8. Align the screw holes on the socket and backbox and tighten until the socket is firmly seated and does not move.

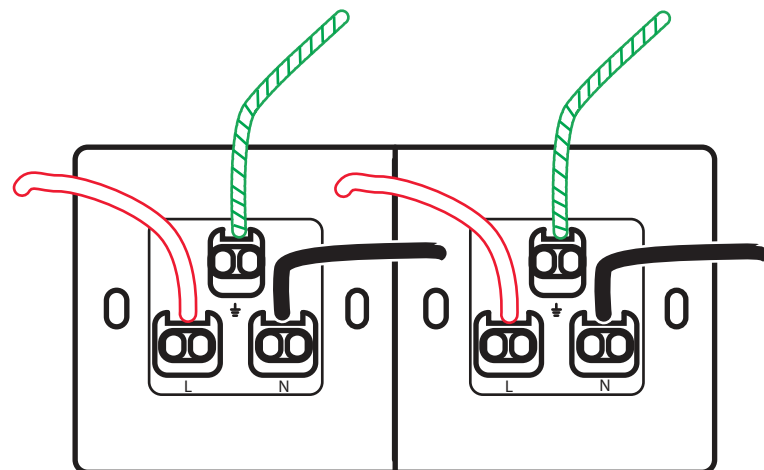
9. Align the glass surround on the socket and push firmly until it clicks into place.

Wiring diagrams

1 Gang 13A Un-Switched Socket



2 Gang 13A Un-Switched Socket



The completed installation should be tested in accordance with the current IEE Wiring Regulations by a qualified electrician.